



## DRAFTING CONTESTS UPDATE

Available as requested. Instructors must communicate with Jeremy King at [jking@wate.edu](mailto:jking@wate.edu) by April 1<sup>st</sup>. Anyone that has not requested available software by this time will need to plan on bringing computers.

### Software we have licenses for:

- AutoCAD 2012
- AutoCAD Architecture 2012 (64 bit)
- AutoCAD MEP 2012 (64 bit)
- Autodesk Inventor Professional 2012
- AutoCAD Electrical 2012
- AutoCAD Map 3D 2012
- AutoCAD Civil 3D 2012
- AutoCAD Civil 3D Land Desktop Companion 2012
- Autodesk Vault 2012 (Server) for AutoCAD Civil 3D
- Autodesk Sketchbook Pro 2012
- Autodesk Alias Studio 2012
- AutoCAD Raster Design 2012
- AutoCAD Revit MEP Suite 2012
- Revit MEP 2012 (64 bit)
- Revit Architecture 2012
- Revit Structure 2012
- CATIA V5 R20
- Chief Architect X4

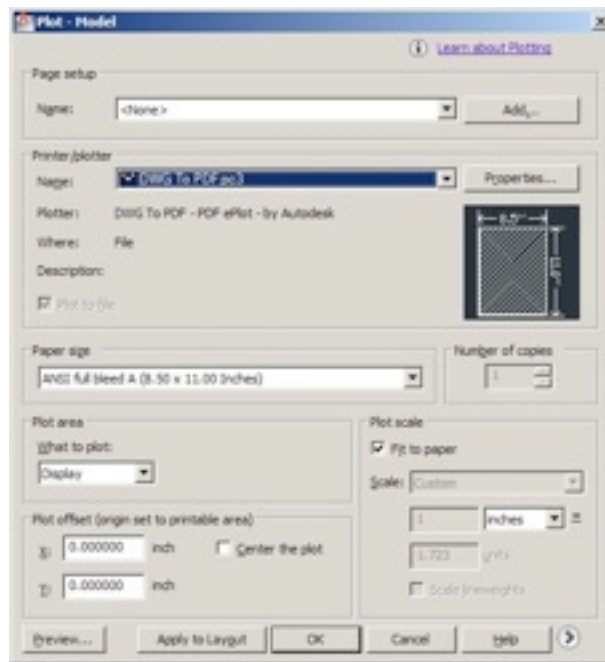
### On all stations:

- Microsoft Windows 7 Enterprise (64bit)
- Intel® Core™ i7 CPU
- 2.80 GHz Processor
- 8GB Ram
- 22" Widescreen Flat panel Monitor
- AutoCAD 2012 (64 bit)
- AutoCAD Architecture 2012 (64 bit)
- Revit Architecture 2012
- Autodesk Inventor 2012
- CATIA V5 R20
- Chief Architect X4
- 3D Connexion Space Pilot Pro 3D Mice.

It is recommended that instructors teach their students the proper way to save or print to a PDF file.

In all of the Autodesk software the PDF print driver is already installed on the latest versions.

I have included an image of what the print menu will look like.



We will talk with the contest chair about Chief Architect because we do not have an active PDF printer for the software.

***Advisors: You will need to identify the software your students in either Architectural or Technical Drafting will be using when you send in your registration to the state office.***

Schools needing to bring in their own computers must contact Jeremy King at WATC at [jking@watc.edu](mailto:jking@watc.edu) before April 1st 2012. I will provide 1 power strip per table (3 110v outlets per contestant) in the room. 1 table in the room can hold 2 contestants.